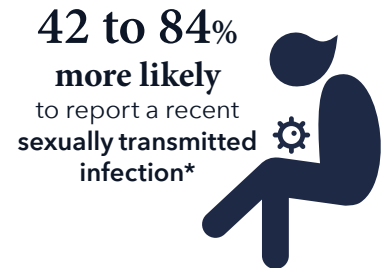
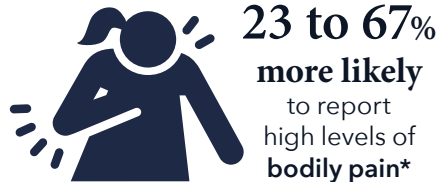


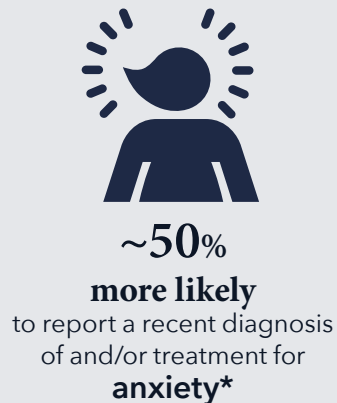
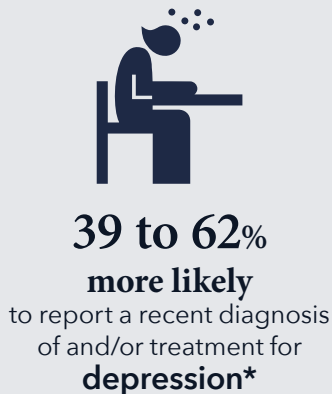
# Sexual violence and health

FINDINGS FROM THE AUSTRALIAN LONGITUDINAL STUDY ON WOMEN'S HEALTH

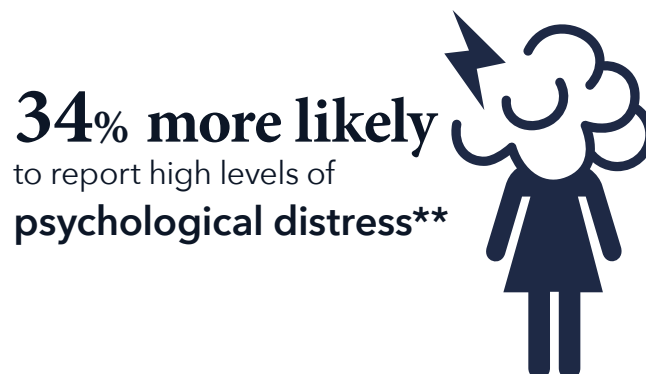
Compared to those who had not experienced sexual violence,  
women who had experienced sexual violence were:



Compared to those who had not experienced sexual violence,  
women who had experienced sexual violence were:



Compared to those who had not experienced sexual violence,  
women born 1989 to 1995 who had experienced sexual violence were:



\* Risk ratios varied for women born 1989 to 1995, 1973 to 1978, and 1946 to 1951.  
\*\* Psychological distress was only measured in the 1989 to 1995 cohort