

# Prevalence of sexual violence

FINDINGS FROM THE AUSTRALIAN LONGITUDINAL STUDY ON WOMEN'S HEALTH



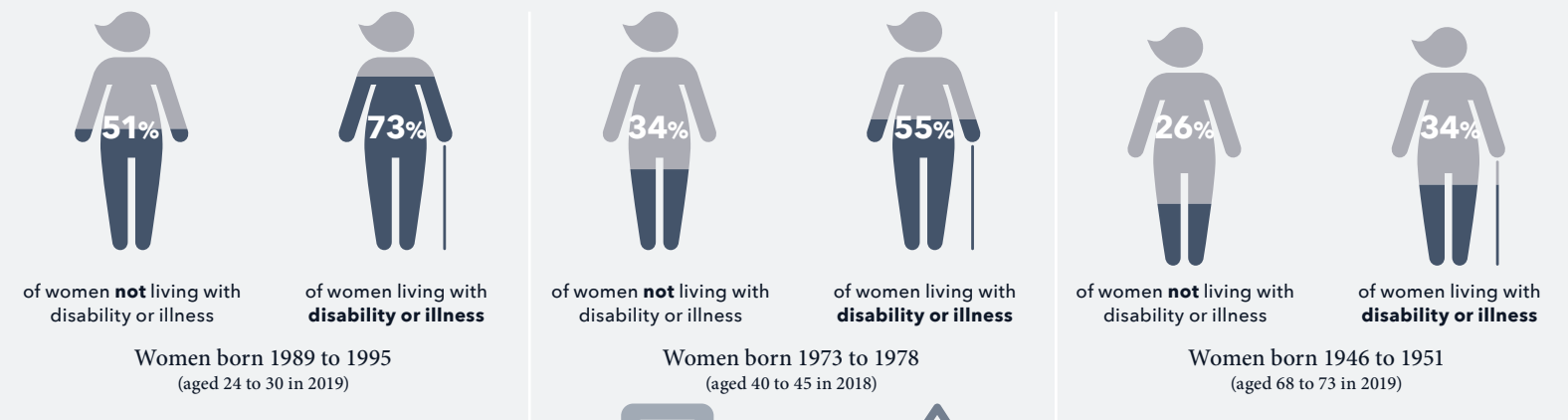
## Prevalence of sexual violence: Priority populations

FINDINGS FROM THE AUSTRALIAN LONGITUDINAL STUDY ON WOMEN'S HEALTH

Women who identified as bisexual or exclusively/mainly lesbian were more likely to have reported sexual violence than those who identified as exclusively/mainly heterosexual



Women who had disability or illness were more likely to have reported experiencing sexual violence than those who did not have disability or illness



There were very few differences in the prevalence of sexual violence between women who lived in:

